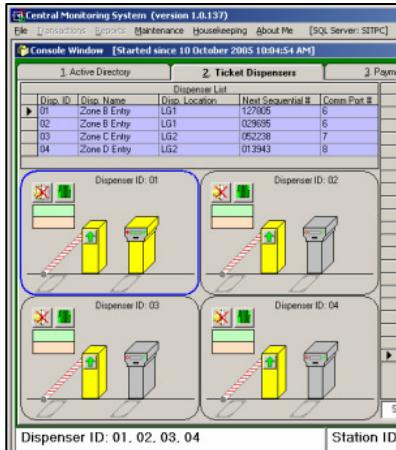


# CENTRAL MONITORING STATION



## Central Monitoring Station

- ~ Pentium IV Motherboard and Processor.
  - ~ 512MB ECC DDR RAM.
  - ~ Two (2) X 80GB SATA Hard Disk 7,200rpm (150MB/s)
  - ~ Fast Ethernet Network Card.
  - ~ 17" LCD monitor)
  - ~ One (1) Windows based MaxPark Parking Administrative Software License.
  - ~ Setting of operation parameter and download to all computers.
  - ~ Maintenance of parking fee table and valid user database.
  - ~ Gathering and collation of all transaction data from CPS.
  - ~ Time synchronization among all related equipments.
  - ~ Reports query and generation.
  - ~ XP Windows Operating System
  - ~ DVD backup dual writer
- SMC Application Software;**
- ~ Real time monitoring for season pass card and hardware.
  - ~ Season card access – Insert, Edit & Delete season card information; 3 control modes: Anti Pass-back, Black List & Expiry Date.
  - ~ Five (5) standard SMC software report formats – Season Card Listing, Season Details, Status Report, Transaction Listing, Event Listing.



SPECIFICATION	
Voltage:	230v
Frequency:	50/60Hz

